

## **WiSDOM AiR iDEA**

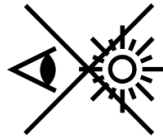
- disinfecting panel luminaire

---

1. Content of the package
  - Attachments
2. Product specifications
3. Installation
  - Attachment of the luminaire
  - Electrical connections



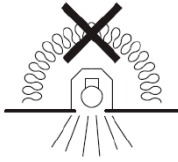
Read the installation instructions before installation.



Do not look directly at the light source.



Conforms to EC Directives.



Luminaire must not be covered with thermal insulation.

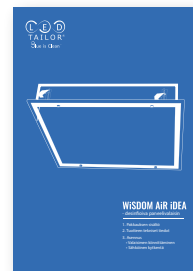


There are no serviceable parts inside the luminaire. Broken luminaire should be replaced with a new one.



Recyclable

## 1. Content of the package



1. WISDOM AiR iDEA luminaire
2. Installation instructions

### The attachments we recommend to be used with the WISDOM AiR series:



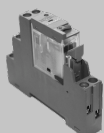
**PD-C 360i/8plus - motion detector**  
For small spaces (for example toilets and small office spaces)  
Detection range diameter 8m, Max. installation height: 5m  
Product number: EP10425042

**PD-C 360i/24plus - motion detector**  
For bigger spaces (for example classrooms)  
Detection range diameter 24m, Max. installation height: 10m  
Product number: EP10425288



**Surface mounting case C IP 20, for dry rooms**  
Product number: EP10425370

**Surface mounting case C IP 54, for wet rooms**  
Product number: EP10425905



**Plug-in relay** - 607-2CC-DM-230VAC - Song Chuan  
Product number: 95324

**Relay socket** - STN 607 Socket - Song Chuan  
Product number: 95327



**Mobil-PDi/Mdi**

The detectors are remote controllable. A single remote control can be used to control several detectors.  
Product number: EM10425509

## 2. Product specifications

### WiSDOM AiR iDEA

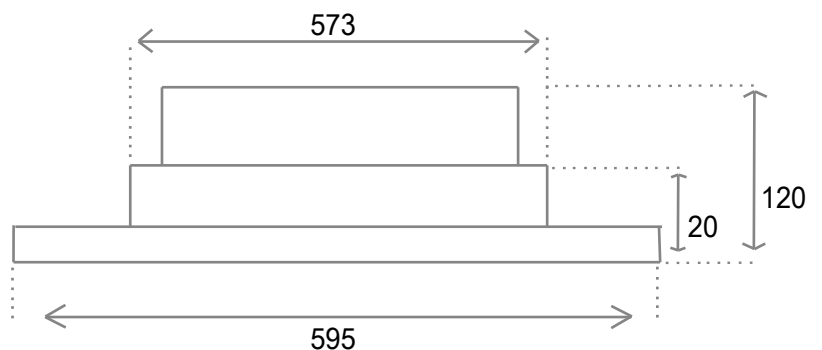
<b>Total power consumption</b>	blue: 125 W	white: 70 W
<b>Operating voltage</b>	230 VAC	
<b>Protection class</b>	IP65	
<b>Operating temperature</b>	-20...40°C	
<b>Cord</b>	2 m (5x1.0 MSK)	
<b>Materials</b>	frame: painted steel light shielding: glass	
<b>Method of attachment</b>	recessed ceiling installation	
<b>Weight</b>	15 kg	
<b>Warranty</b>	3 years	

Product number	Control method	Color temperature (K)	Maximum amount of luminaires per fuse			
			16A type C	16A type B	10A type C	10A type B
LTi0786	ON/OFF	3000	28	20	17	12
LTi0793	ON/OFF	3500	28	20	17	12
LTi0809	ON/OFF	4000	28	20	17	12
LTi0816	ON/OFF	4500	28	20	17	12
LTi0823	ON/OFF	5000	28	20	17	12
LTi0830	ON/OFF	5500	28	20	17	12
LTi0151	ON/OFF	10 000	28	20	17	12
LTi0144	DALI	2200 - 10 000	14	11	7	7
LTi0892	DALI	2200 - 10 000 RGBW	6	4	4	3

## 3. Installation

### Hole size:

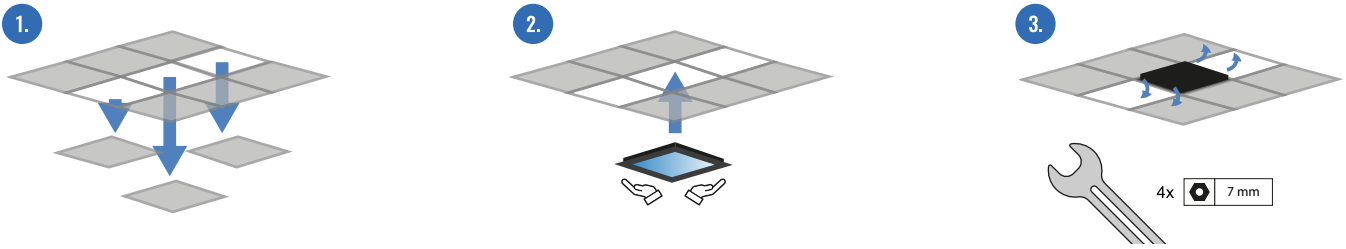
	A	B
600x600	577	577



[mm]

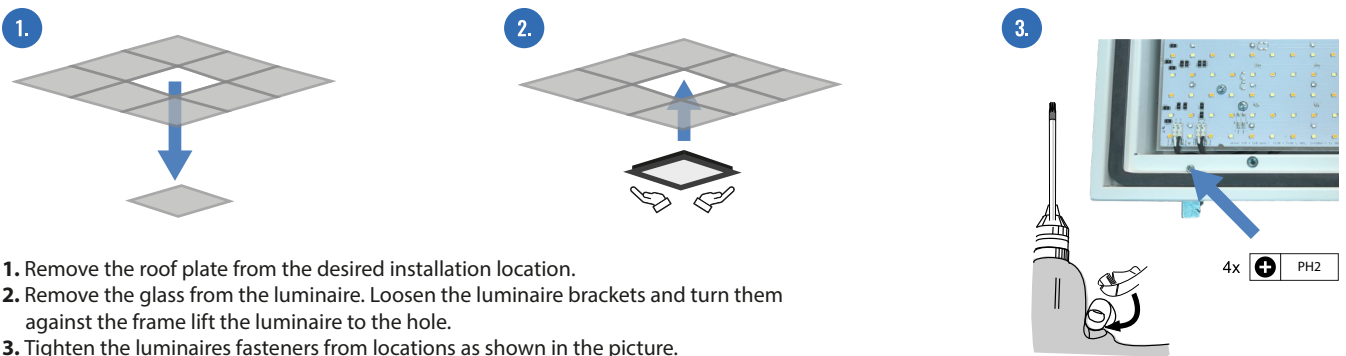
## Attachment of the luminaire:

### Installation from above



1. Remove the roof plate from the desired installation location and adjacent to it.
2. Loosen the luminaire brackets and turn them against the frame.
3. Lift the luminaire to the hole. Turn the fasteners open and tighten.

### Installation from below

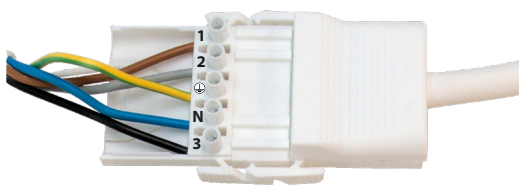


1. Remove the roof plate from the desired installation location.
2. Remove the glass from the luminaire. Loosen the luminaire brackets and turn them against the frame lift the luminaire to the hole.
3. Tighten the luminaires fasteners from locations as shown in the picture.

## Electrical connections:

**NOTE!** The luminaire may only be connected by an authorized electrician. Before starting the connection, make sure that the wires are free of voltage.

### DALI



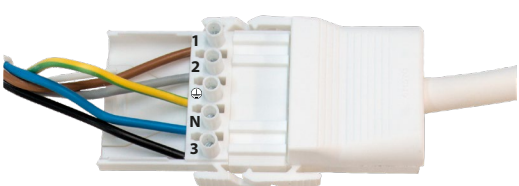
- 1 L(brown)
- 2 (DALI (grey)
- ⊕ (green-yellow)
- N (blue)
- 3 (DALI(black)

The default setting for DALI addresses:  
DALI 1= tunable white  
DALI 2 = blue light disinfection

**NOTE!** Never short-circuit the DALI-conductors. Make sure the DALI-conductors are isolated from each other when DALI is not used.

### ON/OFF

Signal for dimming the white light is brought from push button to connector 3. Connecting the dimming function is optional, i.e. white light is switched on/off with full brightness by bringing electricity to connector 1.



- 1 L White light
- 2 L Blue light
- ⊕ (green-yellow)
- N Neutral (blue)
- 3 Switchdim (white)

Dimming the white light with a push button functions as follows:

- Long push adjusts brightness of white light up/down.
- Short push switches white light on/off

Current brightness level stays in luminaire memory once switched off. Once switching the luminaire back on, brightness is automatically set to same level previously used.