



ANTiBAC

-white general light

*Pure white,
daylight-like light
that restricts the
growth of microbes*

INNOVATED • DESIGNED •
IN FINLAND • MANUFACTURED

**Daylight-
like**

**50% less energy
consumption over
standard tubes**

Flicker-free

**Restricts the
growth of
microbes**

*Activates the
purifying properties
of catalytic coating*

**Fits standard
T8 fluorescent
tube luminaires**

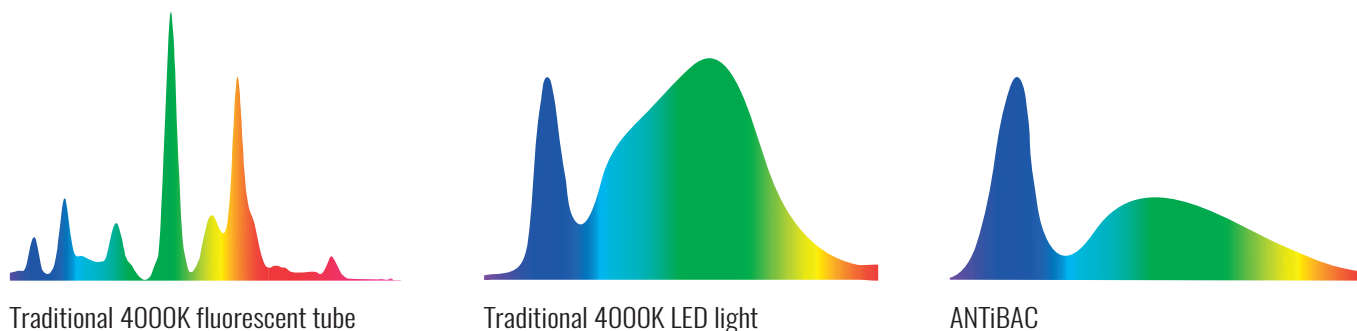
ANTiBAC produces a flicker-free and energizing pure white light. ANTiBAC also functions as part of the LED Tailor photon disinfection system, restricting the growth of microbes and activating the purifying properties of Catalytic coating much more efficiently than ordinary lights.

The white ANTiBAC light is designed to replace traditional general lighting. Existing fluorescent tubes can be replaced with LED tubes without having to change the lighting fixture. Special luminaires with greater luminous flux are also available.

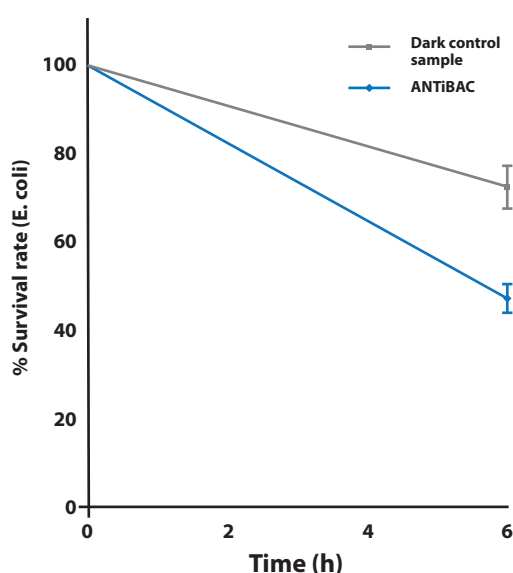
The best lighting solution for following environments:

- hospitals
- laboratories
- cleanrooms
- food industry
- indoor air quality
issue sites
- nursing homes
- schools and day care centers
- dental clinics
- veterinary clinics
- grocery stores
- restaurants and kitchens





The exceptional properties of ANTiBAC light are the result of its precisely controlled spectrum. Although the light is perceived as being pure white, it contains multiple amount of blue wavelengths than typical fluorescent or LED lights, thereby also activating the cleansing action of catalytic coating much more efficiently than ordinary light.



Survival of *E. coli* on agar plate after 6 hours.

In spring 2018, laboratory tests were conducted at the Turku University of Applied Sciences to determine the efficiency of LED Tailor's ANTiBAC light in the inactivation of *Escherichia coli*. The bacteria were plated on agar and irradiated at an intensity corresponding to standard office lighting (500 lux). The results were confirmed by conducting three separate tests, with each test utilizing three parallel samples from each point of analysis.

**> 53 %
in 6 hours**

**Our biological
response on light
varies depending
on wavelengths**

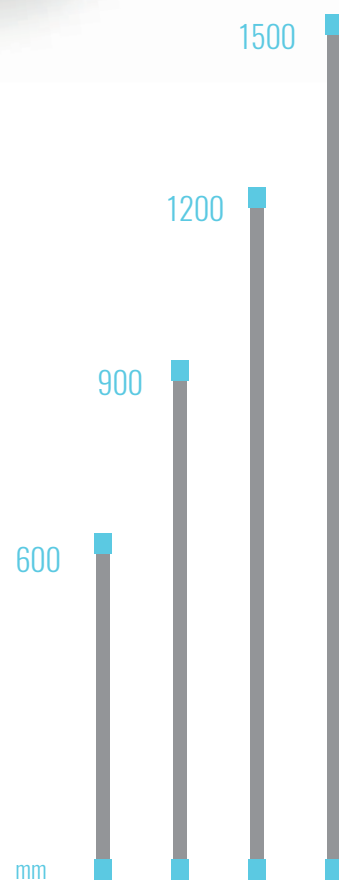
Spectrum of light in general has a proven effect on:

- Sleepiness (reduces melatonin production)
- Cognitive performance
- Reaction speed
- Processing speed of information in the brain
- Working memory
- Emotional states

Source: University of Eastern Finland

ANTI-BAC AIRTUBE T8

	600	900	1200	1500 mm
Power consumption (W):	10	15	19	28
CRI:	Ra >70			
Luminous flux (lm):	1280	1890	2400	3460
Flickering percentage:	< 5%			
Colour consistency:	MacAdam 3 SDCM			
Socket type:	T8 / G13			
Weight (g):	225	300	385	445
Average lifetime:	125 000 h (L70B50 / Ta 25°C)			
Operating temperature:	-40...50 °C			
Beam angle:	120°			
Protection class:	IP20			
Materials:	Anodised aluminium, PC-plastic (fire resistance class of plastics UL94-VO)			
Warranty:	Unlimited 3-year warranty up to 35°C			
Certifications:	CE, RoHS			



“

“The new lights are pleasant and refreshing, and the students seem more alert in class. A few people no longer have migraines since the new lights were installed. I myself am cured of weekly bouts of migraines, and my eyes have stopped bothering me as well. We are so pleased with the solution that we have already decided to have more LED Tailor products in our other premises!”

- Sirkku Leikkonen, Rector, Kirkkonkylä School Perniö

ANTI*BAC* i*DEA*



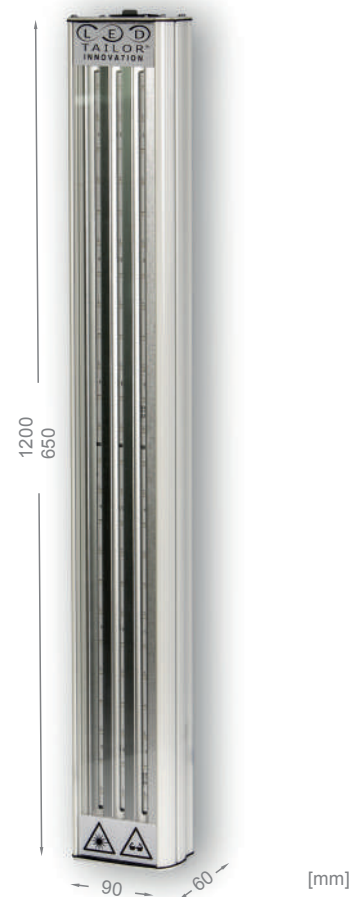
- High protection class panel luminaire for most common ceiling structures.
- Includes both white ANTiBAC light and also blue WiSDOM AiR disinfection light.
- Tunable colour temperature 2200 – 10 000 K.

	Blue:	White:
Power consumption:	120 W	60 W
CRI:	-	>90
Luminous flux:	-	8500 lm
Weight:	15 kg	
Average lifetime:	50 000 h (L70B50 / Ta25°C)	
Operating temperature:	-20...40 °C	
Beam angle:	120°	
Protection class:	IP65/65	
Materials:	frame: painted steel light shielding: glass	
Connection cable length:	2 m (5x1.0 MSK)	
Installation:	recessed ceiling installation	
Control method:	DALI / SwitchDim (3-5 DALI addresses / luminaire)	
Warranty:	3 years	
Markings:	CE	

ANTI*BAC* MA*RiO*

	AM 650:	AM 1200:
Power consumption:	50 W	100 W
CRI:	75	75
Luminous flux:	7000 lm	14000 lm
Weight:	2,8 kg	6 kg
Average lifetime:	50 000 h (L70B50 / Ta25°C)	
Operating temperature:	-20...40 °C	
Beam angle:	120°	
Protection class:	IP44/65	
Materials:	frame: aluminium light shielding: glass/PC	
Connection cable length:	2 m (3x1.0 MSK/DALI 2x1.0 MSK)	
Installation:	tiltable bracket	
Control method:	DALI / SwitchDim	
Warranty:	3 years	
Markings:	CE	

- Powerful general light for areas with a need for high luminous flux.



LED luminaires for T8-tubes:

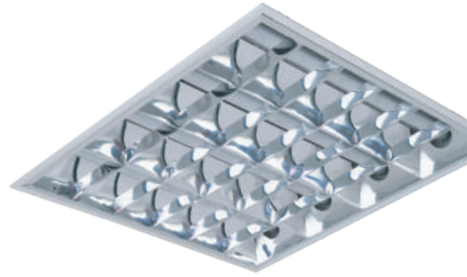
LED Boxeo

60 x 60 cm light module

IP20

4 TUBES

Available lengths: 600 mm
 Installation: T-Lattice
 Material: Steel sheet
 Socket type: T8 / G13
 Voltage&Frequency: 230V AC, 50/60 Hz



LED Teva slim

Small open light luminaire

IP20

3 TUBES

Available lengths: 1200 mm / 1500 mm
 Installation: Surface mounting or hanging rail
 Materials: White painted galvanized sheet steel
 Socket type: T8 / G13
 Voltage&Frequency: 230V AC, 50/60 Hz
 Connection: Through-wired by default



LED Duo

Universal splash-proof lighting fixture

IP44

2 TUBES

Available lengths: 600 mm / 1200 mm / 1500 mm
 Installation: Swing or surface mounting, suspension rail
 Materials: White painted galvanized steel sheet / aluminum, ABS plastic finish
 Socket type: T8 / G13
 Voltage&Frequency: 230V AC, 50/60 Hz
 Connection: Through-wired by default



LED Prima plus

Dust and moisture protected
 industrial light fixture for demanding applications

IP66

2 TUBES

IK10

Available lengths: 600 mm / 1200 mm / 1500 mm
 Installation: Surface mounting or hanging rail
 Materials: Impact resistant polycarbonate body, stainless steel latches
 Socket type: T8 / G13
 Voltage&Frequency: 230V AC, 50/60 Hz
 Connection: Through-wired by default



LED Uniqa

Elegant LED luminaire for offices and public spaces

IP20

2 TUBES

Available lengths: 1200 mm / 1500 mm
 Installation: Ripustusasennus (80 cm ripustusvara)
 Materials: White steel sheet, aluminium louvre (high-gloss/matt)
 Socket type: T8 / G13
 Voltage&Frequency: 230 V AC, 50/60 Hz
 Connection: Through-wired by default

